



2024

St Louise's College Prospectus

A Centre of Excellence



www.stlouises.org.uk



A message from the Principal

Thank you for your interest in St Louise's Comprehensive College and for taking the time to read our Prospectus. As the Principal of St Louise's College, it is with a sense of pride that I present an insight into the life of our vibrant, successful learning community. I trust that it will assist you in making a well-informed choice for your child's post primary education.

As a co-educational college, it is our privilege to welcome boys and girls to our school, St Louise's is a beacon of excellence for all young people in West Belfast and beyond. Parents it is an absolute joy to be able to educate one family together, brothers and sisters within our centre of excellence which is truly all inclusive. We welcome and value all young people equally and ensure that all students are liberated to achieve their full potential through high quality learning and teaching, and compassionate pastoral care. As a recognised centre of excellence, we strive tirelessly to nurture the gifts of all young people in a community compassionate about social justice, equality of opportunity and care of the individual. We promise to provide the highest quality of education possible for your child.

We have been the recipients of many awards in education including the Jerwood Award for Excellence in Education, the Schools Curriculum Award on three occasions and the BECTA Award for Excellence in ICT. We have also received the Investors in People Bronze Award, Investors in People Gold Award, the International Schools Award and the Eco Schools Flag. In December 2016 we were the recipients of the Aisling Award for Excellence in Education which is a superb accolade

for St Louise's and an indication of how the school continues to flourish as a Centre of Excellence for the young people of West Belfast and beyond.

In 2021 we received the Nurture Schools Award, Investors in People Gold Award and Catholic Schools Award.

We face the future with tremendous hope because we are one of the few schools in Northern Ireland which already offers many more courses than the minimum required under the Entitlement Framework. As one of the only schools which has City and Guilds affiliation, we offer quality technical and vocational courses alongside our huge suite of academic subjects. In our school you can be confident that your child will have access to high-quality pathways and careers advice which will lead to future success in Higher and Further Education or the world of work.

St Louise's, however, is about much more than qualifications and outstanding results. As a Catholic, Vincentian College whose motto is 'Excellence through Caring', we work tirelessly to ensure that each student is valued and appreciates his or her dignity and worth as a person and respects others.



Our young people are nurtured in a supportive, caring faith community which develops their emotional intelligence as well as the moral and spiritual values essential to growth as a young Catholic and future leader in society.

St Louise's is, above all else, a happy school, a place where students are expected to work hard and where they also find friendship, enrichment and fun. As a sustainable college at the forefront of education for over sixty years, we face the future with great confidence. It would indeed be a privilege to work closely with you, the parents, to ensure that your child realises his or her dreams over the next seven years.

I trust that you will find our Prospectus informative and useful. If you require further information, please contact the college by telephone or email. Alternatively you can visit our website at www.stlouises.org.uk

With best wishes for your child's future happiness and success.

Mary McHenry
Principal

Excellence in Faith Development & Reaching out



WE BELIEVE

- ✓ In supporting all our students in an inclusive, Catholic community so that they have a sense of belonging and being valued
- ✓ In academic excellence for every young person
- ✓ In high expectations for all our students
- ✓ That every student is made in the image of God
- ✓ That every student deserves the best quality education and pastoral care that we can provide
- ✓ In all-ability schools based on justice and equality for all young people
- ✓ That every child has gifts which we must nurture and develop in partnership with the home
- ✓ In service to the local and global community
- ✓ In lifelong learning

WE WILL

- ✓ Enable your child to realise his or her full potential in a happy, safe, caring and hard-working community
- ✓ Nurture the all-round development of your child
- ✓ Work in a respectful partnership with the home
- ✓ Respect the dignity and potential of your child
- ✓ Empower your child through student voice
- ✓ Promote an ethos of caring and service
- ✓ Encourage your child to follow in the footsteps of great people of faith
- ✓ Promote in your child a desire to play an active role in society in the twenty-first century
- ✓ Encourage participation in activities which promote respect for diversity and mutual understanding



“

Students are nurtured in a supportive, caring faith community which develops their emotional intelligence as well as the moral and spiritual values essential to growth as a young Catholic and leader in society”

(Nurture School Award, 2021)

- ✓ Provide opportunities for individual and communal acts of worship
- ✓ Continue to develop a fair and just education system for all young people
- ✓ Encourage all members of the school community to bear witness to Gospel values in their actions and relationships with others



Excellence in Transition

In the summer term a member of staff visits our feeder primary schools to talk to the primary 7 teachers about the children who are transferring to our school.

An induction afternoon takes place in June for all students who are transferring in August. This is an opportunity for students and parents to meet the Pastoral Team who will be working with the students when they transfer to St Louise's. Students and parents also have the opportunity to engage in a range of activities facilitated by St Louise's teachers in order to introduce a taster of the Year 8 curriculum.

An innovative and exciting transition programme is delivered to all of our new Year 8 students in August. This programme is delivered by our staff in partnership with our Post 16 students, and our outside partners.



Year 8 students are supported by Post 16 Mentors, some of whom will have been involved in the transition programme.

In term one of Year 8 parents are invited to an individual Curriculum Meeting which allows form tutors and parents, along with students, to draw up a personalised learning plan focusing on key curriculum and pastoral areas.



“

The support from his teachers, Assistant Principal, Head of Year and Progress Leader has been outstanding. His confidence has grown, and he has made many new friends through a variety of extra-curricular activities including being a member of the Gaelic Football team ”

(Year 8 Parent)



A message from year 8

Student

Bryana Morrison – 8G

Hello, my name is Bryana Morrison. I am a year 8 student. In August 2023, I transferred from Gael Scoil na bhfal to St Louise's. I was delighted to start St Louise's but I was also nervous, however, the kind teachers made sure that I felt safe and welcome.

When you attend St Louise's, you will study many subjects. My favourite subjects are Drama, Art and Design and Religion. In Drama, you can express yourself in a unique, creative way. In Art, we have been able to work with paint and clay which is really fun! There are lots of extra-curricular activities also which you can find out more about in this prospectus. I have joined the Irish club and the choir.

Making the choice to come to St Louise's means you agree to come in everyday and work hard to be the best that you can be. The teachers here at St Louise's are fully dedicated to their work and support you through your journey. They will make you feel welcome with their kind hearts.



A message from year 8

Student

Ciarnan Burns – 8B

Hello, my name is Ciarnan Burns, I am a year 8 student at St. Louise's. I previously attended St. Kevin's Primary School. When I first transferred to St. Louise's I was nervous, but I felt at ease after meeting my head of year, Mrs Gallery, she really helped me to settle in and reassured me I was going to love St. Louise's, and I do!

I was eager to come to St. Louise's as I would be able to learn a variety of new subjects, Music being my favourite of them all! I enjoy studying Music as a subject as it is something I am extremely passionate about; I enjoy learning about the different instruments and the many different styles of music that I can play. I play the flute and the tin whistle.

My ambition is to become a musician and I know being here at St. Louise's can help me to achieve my goals later in life. There are many opportunities here at St. Louise's whether you love Science, Maths, Sports, Music, Dance or Drama, there is something for everyone. I have had the opportunity to join the school orchestra as well as the choir.

I would recommend coming to St. Louise's as it is an incredible school with a rainbow of possibilities, where learning is fun, and you can express your creativity in many ways!



Excellence in Learning and Teaching

Key Stage 3 Curriculum

Language and Literacy

English, Critical Thinking and Media Education

Mathematics and Numeracy

Mathematics, Financial Capability and Creative Thinking

Learning for Life and Work

The Arts

Art and Design, Dance, Drama and Music

Physical Education

Physical Education

Modern Languages

French, Irish, and Spanish

Environment and Society

Geography and History

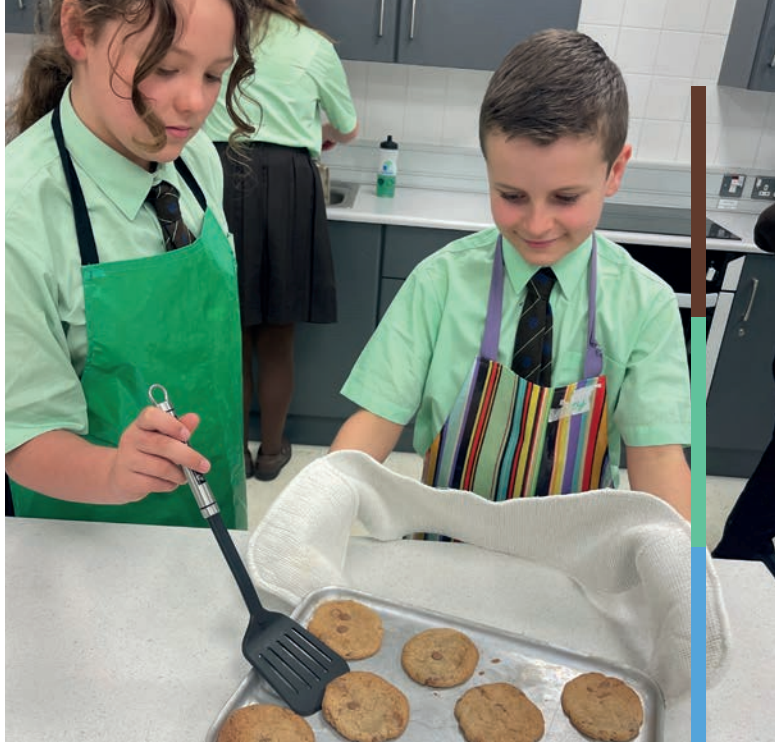
Science and Technology

Science, Technology and Design and ICT

Religious Education

Religious Education





“

St. Louise's encourages children and young people to develop responsibility for themselves and learn self-efficacy in a meaningful way”

(Nurture School Award, 2021)



Excellence in Learning and Teaching

Key Stage 4 Curriculum

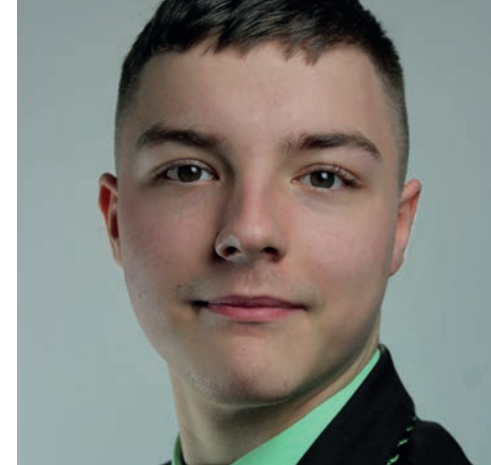
A message from Niamh Whelan Year 12

Hello, my name is Niamh Whelan. I am a year 12 student here at St Louise's. I am currently studying History, Geography and Media Studies as my optional subjects at GCSE. I received a lot of support when choosing my GCSEs at the end of Year 10 through the 'Think Big, Dream Big' process. Throughout this time, we attended presentations and lessons from each subject department. This helped make my decision much easier and relieved much of the pressure that I had been feeling. I intend to study to A' Levels here too and would like to pursue History, Media, and Religious Studies. When I leave St. Louise's, I will go to university, and I plan to study Journalism.

After school, I attend revision classes in subjects such as English and Geography. This has really helped me to grasp understanding of the topics we are learning during class time as we delve into it in a more thorough way. Extra classes have helped me improve my grades and helps me to retain to knowledge for a longer period. We complete our loyalty cards for every after-school revision class or supervised silent study session that we attend. When we complete a loyalty card, we receive prizes such as chocolate bars or trips to places like the cinema. It's a very effective and fun way to get GCSE students engaged in after school classes. I know that if I didn't attend supervised study and revision classes on the run up to my exams, I wouldn't have excelled in the way that I did.

I currently have a full profile of A and B grades before I've even completed the second half of my GCSE exams. I aim to achieve A*/A grades overall at the end of year 12. I feel very supported in St Louise's, and I know that I can achieve my full potential here. The study tips and resources (such as the Inspire study pack) really help. The resources and guidance we receive help to make independent learning and studying more fun and organised.

As a typically quiet pupil, the staff in St Louise's have helped me feel 'noticed' and do not allow me to hide within the crowd. They also do not push me or draw attention to me when they know I feel uncomfortable. Therefore, the most important thing to me about St. Louise's is that I feel safe. It is within this environment that I have been on my journey, developing both academically but also as a person. I believe I am a much more outgoing and confident person now compared to the shy Year 8 I was when I entered St. Louise's. I feel I owe this to the opportunities I have had here and to my teachers who empower me every day. St. Louise's is helping me to create a successful future for myself.



“

Students and staff feel a strong sense of belonging. They are included through purposeful integration and collaboration ”

(Investors in People Gold Award, 2021)

A message from Tomasz McNeice Year 12

My name is Tomasz McNeice, I am currently in Year 12 completing my final year of GCSE. I am studying the core subjects as well as those I selected myself at the end of Year 10. The subjects I chose for GCSE are History, Art and I.T. I selected these subjects from an extensive options list as they were the most appealing to me. My favourite subject would have to be History, learning about previous world events is extremely captivating. I find the World Wars and the politics between nations fascinating.

Learning is what school is all about, which is why I believe the afterschool activities that support learning are so important. For example, afterschool Silent Study is very valuable. I often attend Silent Study so that I can utilise my time effectively and complete independent learning tasks in a quiet, supportive environment. I also attend Art after school to enhance my paintings as well as English to develop my analytical skills. When I stay behind after school, I get my Loyalty Card signed by the teacher. Each time I fill a card I am rewarded for my dedication with different prizes. This helps keep us motivated and committed to our work schedule.

I plan to remain in St. Louise's to study A' Levels and then attend university. For A' Level I would like to pursue History, Religious Studies, and English Literature. I know that studying A' Level will be demanding, however, I feel that I have already established and developed the study routines and independent learning strategies that will help me to succeed.

Currently, I am unsure about my future profession. We have been given so many opportunities to explore our future career, but I remain undecided. What I do know is that my greatest strengths lay within literary based subjects and therefore my career will be within this field. I believe that the school environment of St. Louise's is the reason I have been able to develop fully and why I have high aspirations for my future. To date my grades are high across all subject areas. My goal this academic year is to maintain this standard.

Excellence in Learning and Teaching

Key Stage 4 Curriculum

As the Learning Journey continues for our students, we offer a wide range of curricular opportunities to meet the needs of all learners. We are one of the few schools in Northern Ireland offering such a wide range of subjects with over 40 successful general and applied courses.

At Key Stage 4, students are given the opportunity to choose from three pathways with a wide range of subjects to meet the needs of the local and global economy and develop in our learners the skills and attributes required to enter the next phase of their education and learning.

Our Key Stage 4 Curriculum

For our most valued partners, our students, we:

- ✓ Provide exciting, innovative and successful curriculum pathways at Key Stage 4
- ✓ Give all students quality guidance and support to enable them, with their parents, to make well informed choices based on their strengths, aptitudes and possible career pathways

Arts, Media & Publication

GCSE Art and Design, GCSE Music, GCSE Drama, GCSE Dance, BTEC Level 2 in Performing Arts – Dance, GCSE Media, GCSE Photography

Business Administration and Enterprise

GCSE in Business and Communication Systems, Occupational Studies in Business and Services, GCSE Business Studies

Preparation for Life and Work

Certificate of Personal Effectiveness, Employability Skills, Performance Skills, Prince's Trust

Retail and Commercial Enterprise

Occupational Studies in Hair Therapy and Beauty Therapy

**Engineering and
Manufacturing Technology**
GCSE Technology and Design

**Health, Public Sector
and Care**
GCSE Food and Nutrition,
GCSE Health and Social Care,
Occupational Studies in Child
Care, GCSE Learning for Life
and Work



History and Theology
GCSE History, GCSE Religious
Studies, OCN Level 2 Award in
Religious Studies

**Information
and Communications
Technology**
GCSE ICT, BTEC in Information
and Creative Technology, Digital
Technology, Cambridge National
Certificate in ICT

Science and Maths
GCSE Single Award Science,
GCSE Double Award Science,
BTEC Level 2 Applied Science,
GCSE Maths, GCSE Further
Maths

**Languages, Literature
and Culture**
GCSE English, GCSE English
Literature, GCSE French, Spanish
and Irish, GCSE Gaeilge

**Leisure, Travel
and Tourism**
GCSE Physical Education,
OCR Level 2 National
Certificate in Sport Science,
BTEC Level 2 Travel and
Tourism

Social Sciences
GCSE Sociology, GCSE
Geography and GCSE Politics

“

Everyone works together
to continuously learn and
improve ”

(Investors in People Gold Award, 2021)



Excellence in Learning and Teaching

Key Stage 5 Curriculum

A message from Kate Burns Year 13

My name is Kate Burns and I am a year 13 student studying A 'Level Religion, History and Physics.

St Louise's has been the best school for me and I wouldn't want to be anywhere else. Throughout my time here I have always felt fully supported, encouraged, and developed as a result of the hard work and dedication of my teachers. During the lead up to GCSEs, they went above and beyond to ensure all students felt fully prepared for exams by providing after school and weekend study sessions as well as extra help for coursework and revision. I am confident that without this I wouldn't have achieved 2 A* grades and 7 A grades at GCSE. St Louise's has also enabled me to meet new friends which means that I have always enjoyed coming to school each day. Even during the difficult times of Covid, the sense of community and friendship in the school was so strong and this is what helped me through those difficult and strange times.

As I move into my final two years in the school, I am starting to explore different career options and I am aiming to study Law at Queen's University, Belfast. I am hoping that being a member of the Debating Society will allow me grow in confidence when arguing my point and this in turn will help when I hopefully defend my clients in the courtroom.

I am positive that with the support of my teachers, St Louise's will push me to reach my full potential and achieve my goals. I'm also now a mentor where I am responsible for supporting and guiding new first year students. I love this role and hope that I can help influence and support the experience for our young students so that their school life can be as rewarding and as positive as mine has been.

“

Staff and students continually develop skills, talent and expertise; and network with others in order to learn ”

(Investors in People Gold Award, 2021)



Excellence in Learning and Teaching

Key Stage 5 Curriculum

The next stage on the Learning Journey is to prepare and enable our students to move into the world of Further and Higher Education or work. At this stage in their career, our students are confident in their own ability and are aware of their strengths and aptitudes. They possess the qualifications, personal qualities and attitudes that have been developed in their journey through St Louise's. Flexibility is the cornerstone of Post 16 curriculum provision. This flexibility is achieved by offering the full Entitlement Framework consisting of a broad range of over 40 subjects, of which at least one third are applied subjects.

Our Post-16 Curriculum

For our valued partners, our students, we provide exciting, innovative and successful curriculum pathways at Post 16.

Arts

A'Level in Art and Design, A'Level in Music, A'Level in Theatre Studies, A'Level Dance, BTEC Level 3 in Performing Arts – Acting and Dance

Business Administration and Enterprise

OCR Cambridge Technicals Introductory Diploma in Business, OCR Cambridge Technicals Diploma in Business, GCE Business Studies

Leisure, Travel and Tourism

A'Level Physical Education, OCR Level 3 Sport, BTEC Level 3 Travel and Tourism

**Engineering and
Manufacturing Technology**
A'Level in Technology

**Health, Public
Sector and Care**
A'Level Food and Nutrition, A'Level
Applied Health and Social Care,
CACHE Level 2 & 3

History and Theology
A'Level History, A'Level Religious
Studies

**Information and
Communications
Technology**
OCR Level 3 IT, BTEC in
Information and Creative
Technology, GCE Software
Systems

**Retail and Commercial
Enterprise**
VRQ in Hair Therapy, VRQ in
Beauty Therapy

**Languages, Literature
and Culture**
A'Level in English Literature,
A'Level in French, Spanish and
Irish, A'Level English Language

Media & Publication
A'Level Media, BTEC Creative
Multi Media Production (I-Media),
OCR Level 3 Photography,
Moving Image Arts, GCE
Performing Arts

Social Sciences
A'Level Sociology, A'Level
Geography, A'Level
Economics, A'Level Politics

Science and Maths
A'Level Biology, A'Level
Chemistry, A'Level Physics,
A' Level Maths



“

St Louise's is a friendly,
hardworking community,
within an ethos that
contributes significantly
to the high standards
achieved ”

(Investors in People Gold Award, 2021)

Excellence in

Pastoral Care

Child Centred Pastoral Care

The well-being and happiness of each student is of paramount importance. Our mission to provide excellence through caring extends to all aspects of school life, and underpins our approach to pastoral care. We strive to build strong, nurturing relationships with our students and families, placing the child at the centre of a community of love.

Daily Care

- ✓ Your child will see their form tutor at the start of each day. Form tutors guide, support and nurture the children in their form groups. They help each child fulfil their potential, have high expectations of themselves and meet life's challenges with confidence. Form tutors support the children's learning and their personal development. They accompany their form group on their journey through school and they guide them towards success and personal fulfilment.

- ✓ Your child's year team work very closely with form tutors to support their work. The year team monitor the child's health, well-being and progress. They are the direct link between the family and the school.
- ✓ Our Ohana Suite provides for small group work and wrap around support for all our students.
- ✓ Outside agencies provide emotional wellbeing and personalised learning support tailored to cater for the individual needs and development of our children. The range of services offered in order to empower our students are occupational therapy, educational psychology, art therapy, Family Works counselling, health and social services, Inspire, youth mentoring and nurture projects.

Occupational Therapy

'Occupation' means all the activities a person undertakes, enjoys and values. The occupational therapist views each student holistically and offers strategies, knowledge and support with hopes that it will positively influence multiple aspects of their lives. This is achieved through working directly with students either individually or through group work. Occupational therapy interventions vary between children, as a child's unique needs, interests and capabilities are considered.

Interventions include:

- ✓ Tailored programmes focusing on self-esteem, anxiety management, assertiveness and lifestyle design.



- ✓ Mindfulness at the universal, targeted and individual level.
- ✓ Student council selection and training.
- ✓ Positive occupation provision such as yoga, gardening and artwork.

St Louise's has become the first mainstream school in the country offering occupational therapy in education to support students.

Quality Pastoral Programme

- ✓ A personal development programme for Years 8 to 14 is designed to support the emotional, spiritual and cognitive development of each child as they grow into young adults. The programme promotes constructive decision making and resilience. It is frequently updated with relevant resources and it addresses topical safe guarding issues. Personal and spiritual development is also at the core of an assembly programme delivered by year teams and the Principal on a weekly basis.
- ✓ Our school policies include Anti Bullying, Child Protection, Drugs, Mobile Phone, Acceptable Use of ICT and Behaviour for Learning, all of which aim to safe guard our students.
- ✓ Our reward system and student leadership opportunities, curricular and extra-curricular activities promote achievement, high standards, positive behaviour, a love of learning and excellent attendance and punctuality.



“

Congratulations on your outstanding mission in promoting the dignity, self-esteem and full development of each young person who is made in God's image and uniquely loved by God ”

(Catholic Schools Award, 2021)

Excellence in

Personalised Learning

'Staff in St Louise's College are firmly focused on and dedicated to, providing the very best development opportunities for their pupils, whatever their potential' (Investors in People, June 2011)

We promise to:

- ✓ Set high expectations and encourage high aspirations in partnership with parents, staff and students
- ✓ Track student progress by assessing levels of ability and achievement on entry using CATS baseline testing, CATS at Key Stage 4 and Alps at Post 16
- ✓ Set minimum target levels and grades for all students according to their abilities and aptitudes
- ✓ Provide our students with an overview of their curriculum in all subjects through Learning and Assessment Calendars and Topic Models highlighting knowledge, skills and attitudes to become confident, successful learners
- ✓ Give our students opportunities to engage in a wide range of assessment for learning activities including peer and self assessment

- ✓ Monitor the academic progress of every student through our Assessment for Learning model using outcomes from challenging Learning Opportunities
- ✓ Mentor students throughout the year using staff, peers and Post 16 students
- ✓ Engage students in one-to-one Learning Conversations and draw up Personalised Learning Plans which are shared with all stakeholders
- ✓ Review progress of all students every six weeks and update parents
- ✓ Provide Progress Updates to parents at all Key Stages, three times per year
- ✓ Provide our students with a wide range of activities which enable them to identify their talents and strengths and overcome any barriers to learning through a Learning to Learn Programme
- ✓ Involve our students in co-constructing learning
- ✓ Ensure that all students reach their full potential through a range of intervention strategies which enable all learners to achieve excellence
- ✓ Use attitudinal data (PASS) to inform intervention and support

Additional Educational Needs

St Louise's staff are highly skilled in addressing the needs of all learners and provide differentiated support at all times. We successfully meet the needs of all students including those with additional learning needs and the gifted and talented through our personalised learning approach.



For our valued partners, our students we:

- ✓ Engage in early identification and intervention, availing of the knowledge of parents and primary school teachers
- ✓ Provide individual support through fully qualified classroom assistants
- ✓ Access ongoing assistance from relevant and appropriate external agencies
- ✓ Provide a happy, sensitive and secure pastoral care environment which complements effective learning
- ✓ Use a variety of teaching methods and strategies which encourage active, creative and independent learning
- ✓ Develop and review Personalised Learning Plans in partnership with parents, students and staff
- ✓ Ensure that improvements and achievements are recognised, recorded and rewarded where appropriate
- ✓ Ensure the development of all teachers to meet the needs of the learner





Excellence in Personalised Support

Welcome to the



Ohana Suite

Our extended Intervention Suite, known as our 'Ohana Suite' has allowed for the extension of support in Literacy, Numeracy, Nurture, Occupational Therapy, Lego- therapy, Newcomer, Restorative Practice, Independent Learning, Home Learning, Counselling Support and also facilitates a wide-range of external agencies.

Literacy Support

Our literacy support teacher delivers high quality literacy intervention programmes to students who require additional support with literacy skills development.

Numeracy Support

Numeracy support is delivered by our numeracy support teacher, to students who require one to one or small group intervention to develop numeracy skills.

Newcomer Support

We have an increasing population of Newcomer students who are supported twice weekly in the Newcomer Hub by Ms Sophie Cocault. Sophie is a DELTA-qualified teacher, a teacher trainer (CELTA, CELT-P, CELT-S), a TESOL Lecturer and a course designer.

Nurture Support

Students are referred to our Nurture Suite for social, emotional and wellbeing support. They



“

...Ohana means family and family means nobody gets left behind or forgotten! ”

Suite

will engage in a range of therapeutic activities designed to develop self-awareness, self-esteem and wellbeing.

Sensory Room

A new addition to our Nurture Suite is the Sensory Room which offers a safe, stimulating and relaxing space to students as and when required.

Lego-Therapy

LEGO-Based Therapy is a social development programme that uses LEGO activities to support the development of a wide range of social skills within a group setting.

Playing with LEGO in a therapy setting promotes social interaction, turn-taking skills, sharing, collaborative problem-solving and the learning of concepts. It can be used to target goals around social skills, language and motor skills.

Occupational Therapy

Ms Catherine Wells, our Occupational Therapist, provides support for students in areas of mindfulness, yoga, self-management strategies and the development of resilience.

Post-16 Learning Hub

The Post-16 Learning Hub supports students with study support, literacy support and essay writing skills as well as careers development and social and emotional support.

Restorative Practice

Individual and group sessions are carried out within the Ohana Suite focusing on building relationships, mediation and conflict resolution.



Excellence in

Careers Development

The CEIAG Curriculum is designed to enable our students to develop their knowledge, understanding, skills and experience of opportunities, to manage their career development, and make relevant informed choices, ensuring their successful transition into the ever-changing world of work. The curriculum is delivered through The Pastoral Programme, careers classes, subject areas and key events.

The bespoke curriculum is designed to raise aspirations and meet our students' unique needs. The programme meets the 8 Gatsby benchmarks:

- 1 **A stable career programme**
- 2 **Learning from career and labour market information**
- 3 **Addressing the needs of each student**
- 4 **Linking careers to the curriculum**
- 5 **Encounters with employers and employees**
- 6 **Experiences of workplaces**
- 7 **Encounters with further and higher education**
- 8 **Personal guidance**

The Careers strand in the Pastoral Programme provides the students from Years 8 – 14 with relevant and current careers information. At key transition points in Years 10, 12 and 14 the students are given the opportunity to explore subject choices, and various pathways to further and higher education, apprenticeship opportunities and employment.

Information and supporting materials for key elements of the programme are made available to parents/guardians throughout the school year so that they are also fully informed to guide and support students at these key transitions.

Students in Years 12 – 14 are provided with dedicated Careers Education classes and the opportunity to meet a Careers Advisor for personal guidance. Students have the opportunity to explore Career options, the Local Labour Market and are given guidance to support the UCAS process in Year 14.

Subjects across the curriculum also support CEIAG through subject specific opportunities to explore careers in those areas. Students have had the opportunity to work with Sentinus, Young Enterprise, PWC, BBC as well as local businesses and schools.

The school has close links with past pupils and local colleges and universities including the Widening Participation Unit at Queen's University, Belfast through the Junior and Senior Academy and the Pathway Opportunity Programme.

We develop our students' transferable skills which will allow them to become active learners in the present and effective employees in the future. The school is a member of the Skillsbuilder Partnership, working with employers and impact organisations to develop essential skills to succeed in the world of work.



“
Our students embrace
development and
growth opportunities,
aligned to both their
personal and career
aspiration”

(Investors in People
Gold Award, 2021)

Excellence in

Extra-Curricular Development

St Louise's creates many opportunities for students to develop their talents and gifts both within and outside the classroom. The enrichment opportunities that our clubs offer play a pivotal role in character building and leadership development. Clubs operate before school, at lunchtime, after school and at weekends. This allows all our young people to participate in a myriad of activities and use all their gifts to the full. From the Breakfast Club in the morning to the Homework Club in the afternoon our students' needs are catered for.

Sports & Physical Activity

Athletics
Netball
Basketball
Orienteering
Camogie
Rock Climbing
Canoeing
Rounders
Keep Fit
Hurling
Football

Cross-Country Running
Table Tennis
Dodgeball
Tennis
First-Aid Training
Trampolining
Gaelic Football
Cheerleading
Soccer
Rugby

Music

Guitar Club
Voice Coaching
String Quartet Group
Traditional Choir

Musical Theatre
Instrumental Tuition
Junior Choir

Senior Choir
Orchestra
Religious Choir

Award Bearing Courses

John Paul II Award

President's Award

Subject Based Clubs

Ecological Club
French Club

Geography Club
History Club

Irish Club
Spanish Club

STEM (Science, Technology, Engineering and Mathematics)

Home Economics
Science

Maths

Technology (Bakewell Club)



Performing and Creative Arts

Art Club
Knitting Club
Book Editing
Photography Club
Film Club
Handwriting Club

Dance Club
Reading Club
Drama Club
Ceramic Club
Poetry Club
Craft Club

The World of Media and Personal Development

Bar Competition
Public Speaking
School Magazine
Newsletter Writing Team
Student Council

Movie Club
Debating Society
Team
Rotary

Stretching out the Hand of Friendship

Breakfast Club
Trocaire
SERVE
Community Outreach

Marillac Society
St Vincent de Paul
DePaul Trust

Through our Mission Fund we support a range of local and global charities.



“

I have seen first hand the extra-curricular opportunities given to all students. This generosity of spirit radiates throughout the entire school community”

(Member of Board of Governors, 2022)



Excellence in Celebrating

Celebration of Achievement

In St Louise's there are three 'Celebration of Achievement' ceremonies celebrated annually.

Junior School Celebration of Achievement

This ceremony celebrates the completion of a very successful Year 8 in St Louise's. The students are awarded prizes which include excellence in effort, achievement, attendance and contribution to school life in all its facets.



Middle School Prize Giving

This ceremony celebrates the awarding of Key Stage 3 and Junior certificates to the current Year 11 students who have just completed a very successful Key Stage 3.

Awards also distributed include: attendance and punctuality certificates, individual subject prizes, involvement in school clubs and societies and involvement outside school in the community.

Senior School Prize Giving

This ceremony celebrates the awarding of GCSE, A/S, A2 and Level 2/3 certificates to the current Year 13 and 14 students and acknowledges the outstanding efforts of our Student Leadership Team. Awards also distributed include: attendance and punctuality certificates, individual subject prizes, involvement in school clubs and societies, involvement outside school in the community.

“

The Lord Mayor, a former pupil of St Louise's, spoke fondly of her time at school and encouraged the students to, “follow their passions, make many friends and enjoy their time at school”.”

(Lord Mayor, Ms Tina Black)



Excellence in Performing Arts Welcome to Dance



SLD Dance: IT STARTS HERE...

We strive to enrich the learning experience of all our students, developing them as dancers, creators, and critical thinkers in a space where all feel valued, motivated, supported, and respected.



KS3 Dance- IGNITE YOUR PASSION...

In year 8 students develop their technical, performance and appreciation skills through a variety of dance styles in a highly innovative and creative learning environment.

Dance Academy- BUILD YOUR SKILLS...

The Dance Academy is a specialised training programme that takes place on a Saturday morning in the junior school. The academy is a dance hub with the aim of delivering intensive technical training in Contemporary, Jazz, and Urban, the year finishes with a performance event at our annual showcase.

RAD Scholarship Programme- WORK WITH THE BEST...

At our Breakfast Ballet Scholarship Programme, we offer a vocational style training curriculum. Committed students will initially participate in RAD Grade 3 Ballet classes with Eimear O'Callaghan of NI Ballet School. Classes will follow the world-renowned Royal Academy of Dance syllabus and examination pathway, offering student the opportunity to study with one of the most important dance education organisations in the world.

GCSE and BTEC Dance - CHOOSE YOUR PATH...

Our students are given the opportunity to complete a combined course of study. This allows them to develop, their individual qualities as performers, honing their physical and expressive skills, their knowledge, and application of choreographic process and finally their understanding of the critical appreciation of dance in its physical, artistic, aesthetics and cultural contexts.

A Level and BTEC Level 3- FOLLOW YOUR DREAMS...

Students can select a single or double pathway. These courses of advanced level study encourage the students to develop their creative and intellectual capacity within highly specialised qualifications, alongside the development of their transferable skills such as team working, communication and problem solving. All of these are sought after skills by higher education and employers and will help them stand out in the workplace whatever their choice of career.



“

Ignite your passion; Build your Skills; Work with the Best; Choose your Path; Follow your Dreams ”

(Mrs Louise White, Head of Dance)

Excellence in Performing Arts

Welcome to



The Drama Department is a warm and friendly department. In drama we care about each other and support each other and always work with positivity and enthusiasm

The department is all inclusive and fully comprehensive. The subject is accessible to all our students and our KS3 drama curriculum and range of courses at KS4 and Post 16 courses provide choice for our students.

The Drama Department creates a family atmosphere to support and nurture every individual in our care. It is a happy department where the strong team of teachers, learners and





Arts - Drama

community partners work together to achieve success at a personal and academic level.

We aim to develop self-esteem, confidence and a genuine sense of belonging within the department and the whole school. We believe that a positive frame of mind alongside grounded quality relationships shape happier and successful individuals.

There are five experienced members of staff and the Drama Department comprises

four equipped studios, a computer suite, a written classroom, tutorial rooms and a drama theatre.

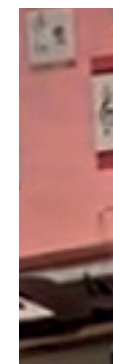
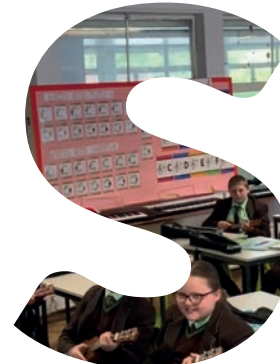
We aim to create lasting memories for our students so that they leave school with not only great academic success but also a real sense of self-worth and most importantly the skills to “perform better in life.”



St Louise's has a long history of excellence in Performing Arts



Excellence in Performing Arts
Welcome to



Year 8 String Project / Woodwind Project

In Year 8 our students are given the opportunity to avail of our one-year String or Woodwind Project. These projects take place during Music class whereby the students are given the opportunity to learn to play the violin, flute or clarinet for the duration of Year 8, free of cost.

Key Stage 3 Music

At Key Stage 3, our students access the NI Curriculum for Music through a wide range of practical music-making activities. Music lessons are one hour per week. Students are introduced to the three key components of music making; Performing, Composing and Listening & Appraising.

These are the topics you will study at Key Stage 3:

Year 8: School Song, Introduction to Ukulele, Introduction to Keyboard Skills, The Musical Elements, African Drumming and The Instruments of the Orchestra.

Year 9: Blues Music, Musical Theatre, Playing the Ukulele, Form and Structure, Hooks and Riffs.

Year 10: Film Music, GarageBand Project, Popular Music, Musical Traditions of Ireland.

Key Stage 4 Music

At Key Stage 4 we deliver the CCEA GCSE Music Specification. Our students develop their skills in composing, listening and

appraising and performing as a soloist and as part of an ensemble. We study a range of music across Western, Classical, Popular, Film and Irish Traditional genres.

Key Stage 5 Music

At Key Stage 5 level we deliver the CCEA GCE A Level Music Specification. This is a two-year course of study consisting of AS and A2. Students study Orchestral and Vocal Music from the Renaissance through to the 20th Century. Students will also continue to develop their performing and composing skills through the relevant components of the course.

Extra-Curricular Music:

Orchestra – Open to all students who have been playing an orchestral instrument for 1+ years

Senior Choir – Year 11-14 students

Junior Choir – Year 9-10 students

Year 8 Choir – Year 8 students

Guitar Club – All guitar students Year 8-14

Instrumental and Vocal Tuition

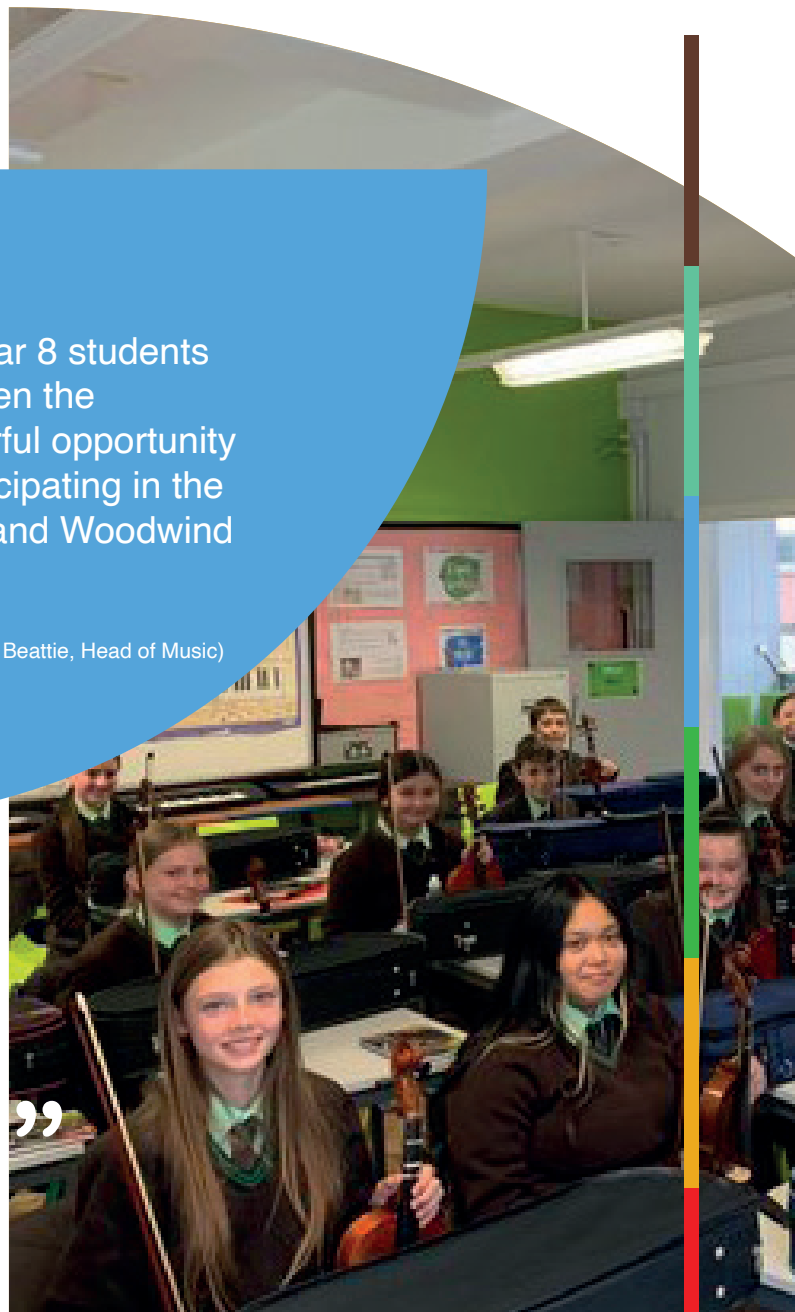
We offer individual and group lessons in the following instruments: Piano, singing, drum-kit, guitar, African drumming, tin whistle, violin, viola, clarinet, flute and saxophone.

“

Our Year 8 students are given the wonderful opportunity of participating in the String and Woodwind Project

(Mr Stephen Beattie, Head of Music)

”



Celebrating Excellence



St Louise's obtained the 'Spirit of Catholic Education Award'

Congratulations to the whole school community on the honour of receiving the 'Spirit of Catholic Education Award 2021'. This is a well-deserved recognition of the on-going and inspirational contribution your school makes to the holistic development and faith formation of children, young people and staff.

Congratulations on your outstanding mission in promoting the dignity, self-esteem and full development of each person who is made in God's image and uniquely loved by God.

St Louise's achieved the 'Investors in People Gold Award'

St Louise's is a unique place because of the talent and dedication of people working together to a common purpose. They paint a picture of a friendly, hard-working community, within an ethos that contributes significantly to the high standards achieved. Success has come from having enthusiastic, creative and engaged staff who understand the journey the school has been on. The school has an excellent reputation and identity. Staff feel a strong sense of belonging. They are included through purposeful integration and collaboration. There is an enormous amount of dedication, hard work and real concern for the success of St Louise's and its pupils. Everyone works together to continuously learn and improve. Your people embrace development and growth opportunities, aligned to both their personal aspirations and school needs. They continually develop skills, talents, and expertise; and network with others in order to learn and share best practice. Change is solution-focused. You work in partnership to instigate and deliver change that supports achievement of objectives, keeping pupils at the heart of the improvement agenda, enabling innovation and transformative discovery to flourish in a measured way.





St Louise's received the 'National Nurturing School Award'

St Louise's encouraged children and young people to develop responsibility for themselves and learn self-efficacy in a meaningful way. St Louise's prides itself on the nurturing and inspiring ethos which promotes mutual respect and celebration of the differences and similarities within its community. Nurture culture is embedded throughout the school, enhancing teaching and learning and promoting healthy outcomes for the children, which is reflected in most of the school's policies. Students are nurtured in a supportive, caring faith community which develops their emotional intelligence as well as the moral and spiritual values essential to growth as a young Catholic and leader in society.

Nurture Principle 6

Transitions are significant in the

“

The school has an excellent reputation and identity. St Louise's College is a unique place because of the talent and dedication of all its people working together to a common goal”

(Investors in People Gold Award, 2021)

A message from our former student

Rebecca Lennon

Left St Louise's in 2017.

Degree Course:

MSc Medicinal Chemistry Queen's University Belfast (2:1)

Currently works at Almac Group as a Plant Chemist

My name is Rebecca Lennon and I am a former student of St Louise's College. Having left St Louise's in 2017, I went to Queen's University and completed a degree in Medicinal Chemistry, which was the field I was guided and encouraged towards by my teachers in St Louise's. My degree was primarily focused on Chemistry in industry. I then completed a Masters degree with a focus specifically on drug development, which led to my current role as a plant chemist for Almac. In this role I work with development chemists and production

engineers to scale up processes for drug manufacture. I work mostly to produce drugs which include peptides as a main ingredient, many of which leave Almac to go on to clinical trials world-wide for the treatment of a range of diseases. I love that this work is so worthwhile, and I know one day my input will hopefully help to save many lives.

My time in St. Louise's really helped me to get to where I am today, I was able to develop my decision-making and problem-solving skills as well as the scientific knowledge of proteins and chemical processes, which built the foundations of my work today.





School Trips

The college organises a broad range of local and international trips for our students. In this last few years we have enjoyed visits to Rome, Berlin, Spain, Munich, Iceland, London and Bulgaria. These are designed to meet students' interests and developmental needs. The destinations change as our staff respond to the student voice and create ongoing opportunities for personal enrichment.



St Louise's Comprehensive College
468 Falls Road - Belfast - BT12 6EN

Tel: 028 90 325631
Fax: 028 90 269600
Email: info@stlouises.belfast.ni.sch.uk
www.stlouises.org.uk



Specialist Schools
and Academies Trust
EXCELLENCE AND DIVERSITY

